

RedBird LED

08-03-2022JAE

RedBird LED Purple-Haze™ Horticultural Luminaire Model HL-190W-PH-DIM

A member of the RedBird Cardinal Linear Light® Series

SPECIFICATIONS

Mechanical

- Massive Extruded aluminum housing and LED Bars For Exceptional Thermal management. All Junctions sealed with Silicone Gasketing
- Crystal clear polycarbonate lens
- Billet aluminum end caps, all Hardware Stainless Steel
- 8' grounded three prong power cable
- Aircraft cable hanger mounting, Griplok leveling system
- Clear Polycarbonate lens to protect the LEDs

Electrical

- Input voltage 120 to 277 VAC; 50-60 Hz
- Power Factor > 0.998 @ 120 VAC, > 0.976 @ 277 VAC
- THD 5.1% @ 120 VAC, 8.5% @ 277 VAC
- Philips Xitanium Simple-Set LED Driver
172 watts ; 1.44 A @ 120 VAC 0.626 A @ 277 VAC
- 0-10 Volt Dimming Control



LEDs

- Luxeon SunPlus 3535 SMD Package; **L1SP-PRP2003500000**;
- **Purple (12.5% Blue) ; 140 degree beam angle**
- **PPF in the blue spectrum (420-480 nm) is 12.5% of total PPF**
- 144 LEDs per AL core PCB, Swage-locked into AL Extrusion

Performance

- **467 PPF**
- **Industries Highest Efficacy System at= 2.69 μmol/j**
- LED life of > 1,000,000 hours @ 65 °C

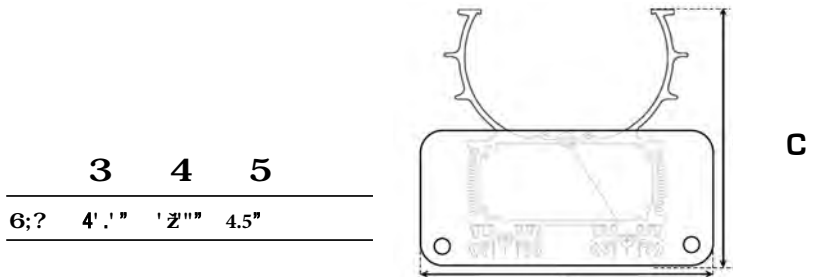
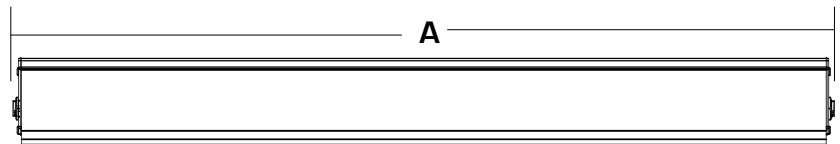
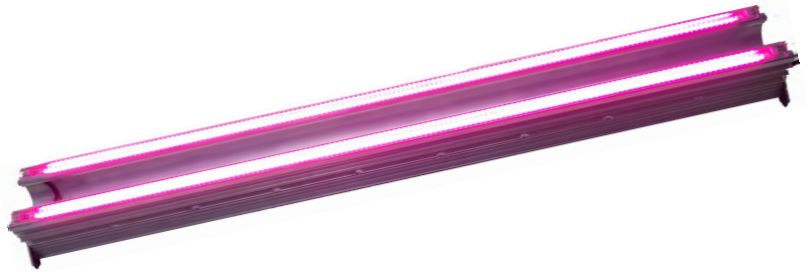
Thermal

- Operating Range -40°C to 105°C
- Listed to UL 1598 C standard for light fixtures.
- IP-65 Compliant

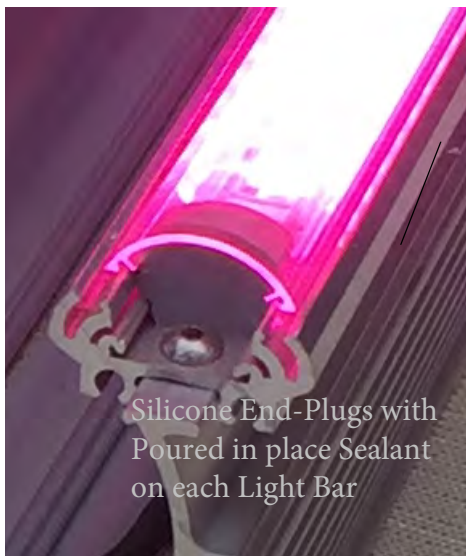
Warranty

- Ten years full replacement or repair

HORTICULTURAL LAMP Full PAR Spectrum Phosphor Converted LEDs



B



Silicone End-Plugs with Poured in place Sealant on each Light Bar

Each LED strip comprises SMD LEDs on AL core PCB, Swage-locked into custom AL Extrusion

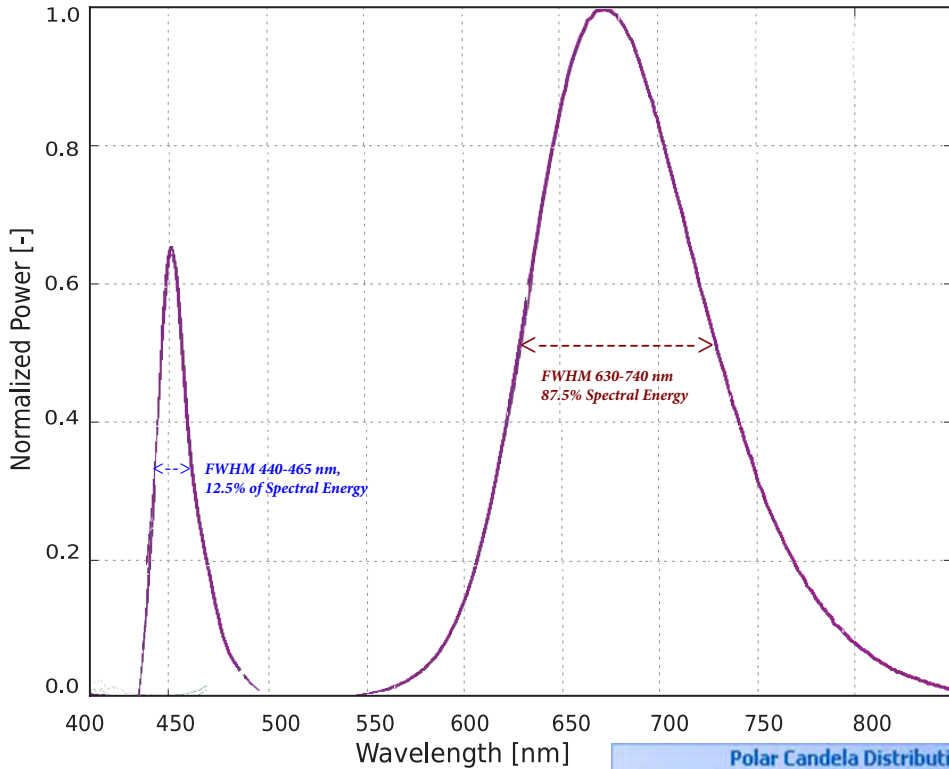


Gland-Nut Provides access to 0-10V Dim Control



Grip-LOK, self leveling Cable Hanger Mounting Kit for Quick install and fast adjustment in lamp Height

High Efficacy **Purple-Haze™** LED with Phosphor converted **Deep RED output**; RED band does not degrade with time or heat; Maintains same spectral power density under all conditions. Broad RED Spectral FWHM from 630-740 nm, hits all plant specific photo-sensitive ranges.



57° FIXTURE BEAM ANGLE

Illuminance at a Distance

	Center Beam fc	Beam Width	
1.0ft	6,809.7 fc	3.1 ft	2.4 ft
2.0ft	1,701.3 fc	6.2 ft	4.7 ft
3.0ft	755.9 fc	9.2 ft	7.1 ft
4.0ft	425.9 fc	12.3 ft	9.4 ft
5.0ft	271.5 fc	15.4 ft	11.0 ft
6.0ft	189.1 fc	18.5 ft	14.2 ft

■ Vert. Spread: 114.0°
■ Horiz. Spread: 93.4°

